

hortiONE 368 & 592 Manual

hortiOne

hortiONE 368



hortiONE 592



jkl

hortiONE GmbH

Content

Introduction 2

Important safety information 2

 Delivery Content (LED-PANEL)..... 2

 Distance between lamp and canopy 3

 Surrounding objects 3

 Scope of application 3

 Environment 3

Security notice & warning 3

 Photobiological safety notice, IEC/EN 62471 (eye safety) 3

Installation and assembly..... 4

 Attaching the mounting brackets 4

 Electrical Connection 4

Technical Specification - Dimensions 5

 LED-Driver MEANWELL HLG 185 – 193W – for hortioNE 592..... 5

 LED-Board hortioNE 592..... 5

 LED-Driver Inventronics – 130W– for hortioNE 368 5

 LED-Board hortioNE 368 5

 DC-Connector 6

 Dimming 6

Cleaning instructions..... 7

Warranty 7

Service and Support 7

About hortioNE GmbH 7

Document Name	Revision and Date	Name
hortioNE 592 Manual	V1.0, 12.2019	J. K.

Usage Manual

Introduction

Thank you for purchasing a hortiONE 368 / 592 LED grow light. This manual explains how to install, run and maintain your grow light. Mounting and installing of the LED fixture may be executed by certified service personnel only. Please read and understand this manual completely before using the product. Only use the product as described in this manual.



Important safety information

- Please read this manual entirely before starting the installation or operation of any lighting solution
- Installation must be carried out by qualified persons, and according to the electrical safety rules & regulations applicable in your country!
- hortiONE 368 & 592 are high-performance light fixtures. Do not touch during operation.
- Connect the system only to the power sources of the right voltage using the correct AC plug type. Protect power cables from being pinched, walked on, or otherwise damaged.
- Do not touch the diodes with your hands, even when powered off
- All electrical work must be carried out by qualified persons.
- Do not stare directly at the light source.
- Dispose of all waste in accordance with local regulations.



DO NOT STARE AT THE OPERATING LAMP. THIS IS HARMFUL TO THE EYE. THE HIGH PORTION OF BLUE LIGHT CAN DAMAGE THE RETINA (EYE) – REFERRED TO AS PHOTORETINITIS -

Delivery Content (LED-PANEL)

1. 1x hortiONE XXX LED Board including 2m DC Cable.
2. 2x mounting brackets

hortiONE 368



hortiONE 592



Distance between lamp and canopy

The distance is depending on your environment and the cultivated plant. A minimum distance of 15cm should be kept in any case!

Surrounding objects

No surrounding objects should touch the lamp or its components. Keep a minimum distance of 5cm to all surrounding objects, including another lamp.

Scope of application

hortiONE LED lamps are designed for horticultural applications only. hortiONE 592 & 368 is only suitable for indoor environments. The Light is suitable for all land-plants (no Algae) and all growing phases. Vegetative and generative growth as well as hibernation and seedlings. Do not use in environments with high humidity like a greenhouse or an aquaponic setup.

Environment

- Indoor environment only
- Temperature range: 0 to + 35C°
- Less than RH90%



Security notice & warning

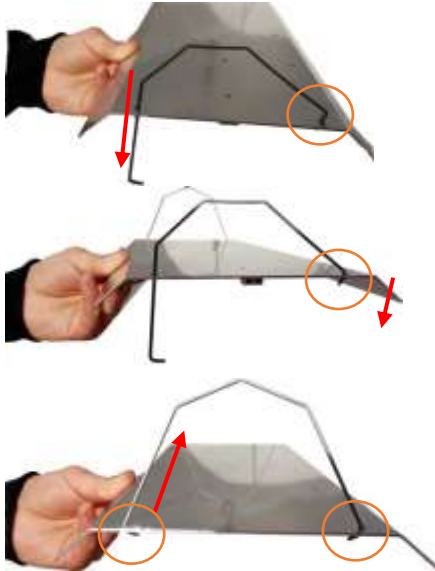
- ! Keep a distance of min. 5 cm to all surrounding objects
- ! Only use the supplied power converter (4). Other power converters may cause damage
- ! If any damage to the module or other system components is detected, cease operation immediately and unplug the main AC-plug
- ! The LED Board and Ballast as well as all components, are not waterproof.
- ! Secure the LED board against falling down and mechanical stresses of any kind
- ! Power off the board and let it cool down for 10 minutes before touching.
- ! Do not stare at the operating lamp. May be harmful to the eye. IEC/EN 62471 (Eye Safety) Group 2, Moderate Risk

Photobiological safety notice, IEC/EN 62471 (eye safety)

hortiONE 592 and 368 LED grow lights are classified as Group 2 (Moderate-Risk) Retinal Blue-light 300-700 (weighted) Does not pose a hazard due to aversion response to bright light or thermal discomfort. Do not stare at the operating lamp. May be harmful to the eye. The high portion of blue light can damage the retina – referred to as Photoretinitis.

Installation and assembly

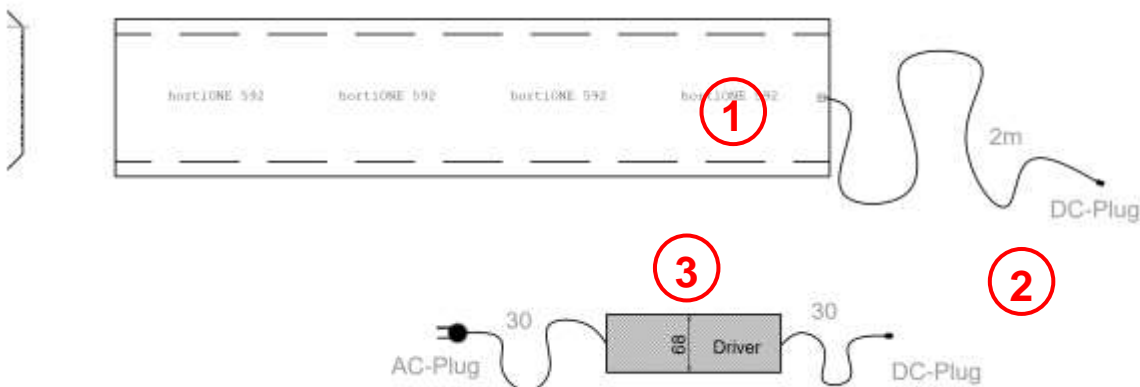
Attaching the mounting brackets



1. Insert the hanger into the first hole and move it down until the other side of the hanger reaches the second hole
2. Push down the other side of the hanger inside the hole
3. Pull up the first side of the hanger and ensure that both wings are looking out below.
4. Repeat the process on the other side of the board.

Electrical Connection

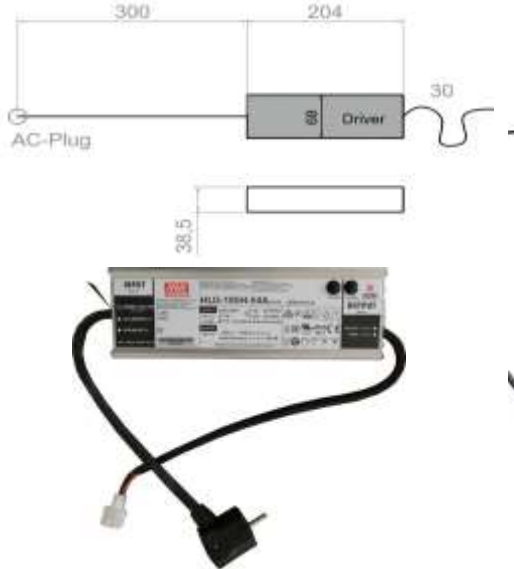
1. First, connect the LED-Board(1) with the DC-Power Cord (2) to the DC-Connector at the LED-Driver (3).
2. Then, attach the Driver(3) to the power outlet prior to powering on the module.



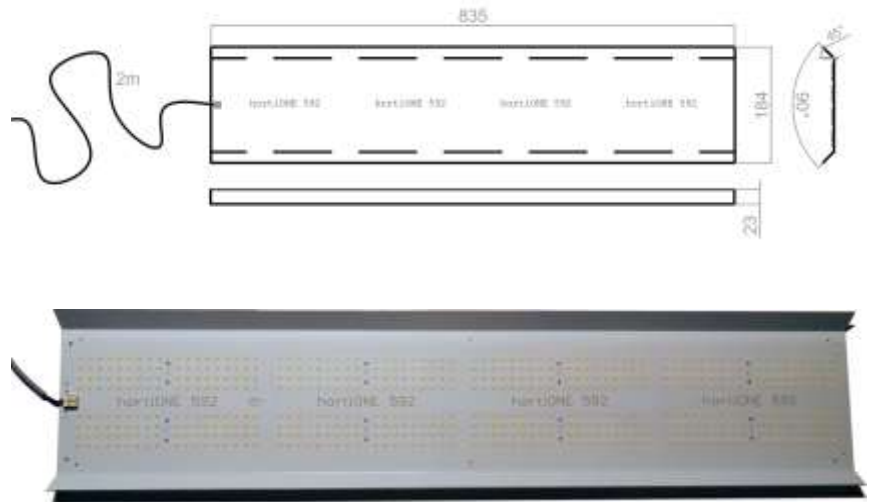
IMPORTANT: CONNECT THE BOARD(1) TO THE DRIVER(3) BEFORE PLUGGING INTO THE POWER SOCKET (4)!

Technical Specification - Dimensions

LED-Driver MEANWELL HLG
185 – 193W – for hortiONE 592



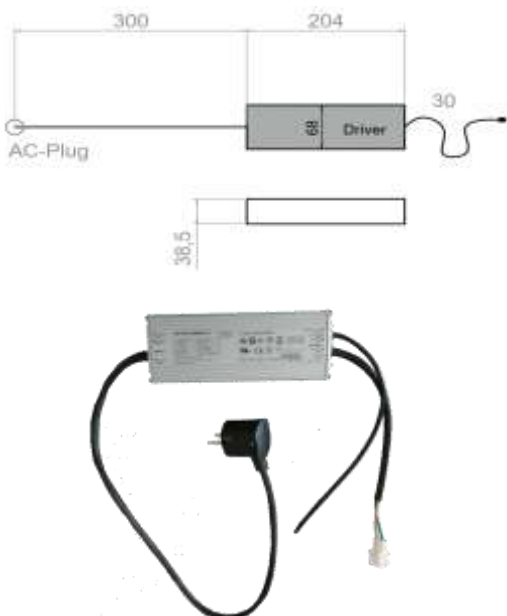
LED-Board hortiONE 592



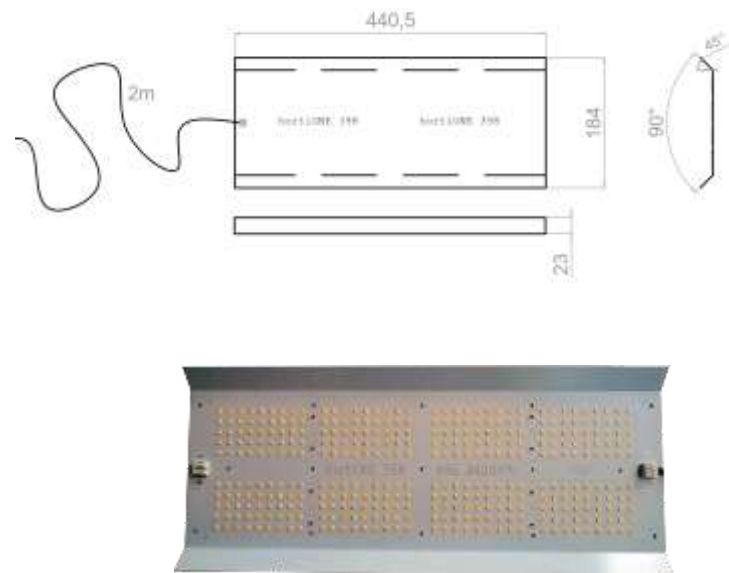
Meanwell Datasheet:

<https://www.meanwell.com/webapp/product/search.aspx?prod=HLG-185H>

LED-Driver Inventronics – 130W–
for hortiONE 368



LED-Board hortiONE 368



Inventronics product-Information and Datasheet: <https://www.inventronics-co.com/product/eum-150sxxdg/>

Measures are in mm

DC-Connector

Manufacturer: TE-Connectivity
 Universal MATE-N-LOK
 NR: 350778-1, 350550-1



Dimming

Dimming is always only via the current [I]. **Do not change the current! [V]**

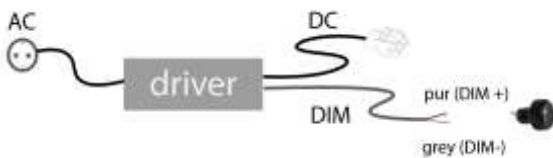


LED-Driver for HO 592 (HLG 185H) can be dimmed using a screwdriver. Kindly note that a separate (not shown) measurement Unit is needed. Only change the electricity [I].



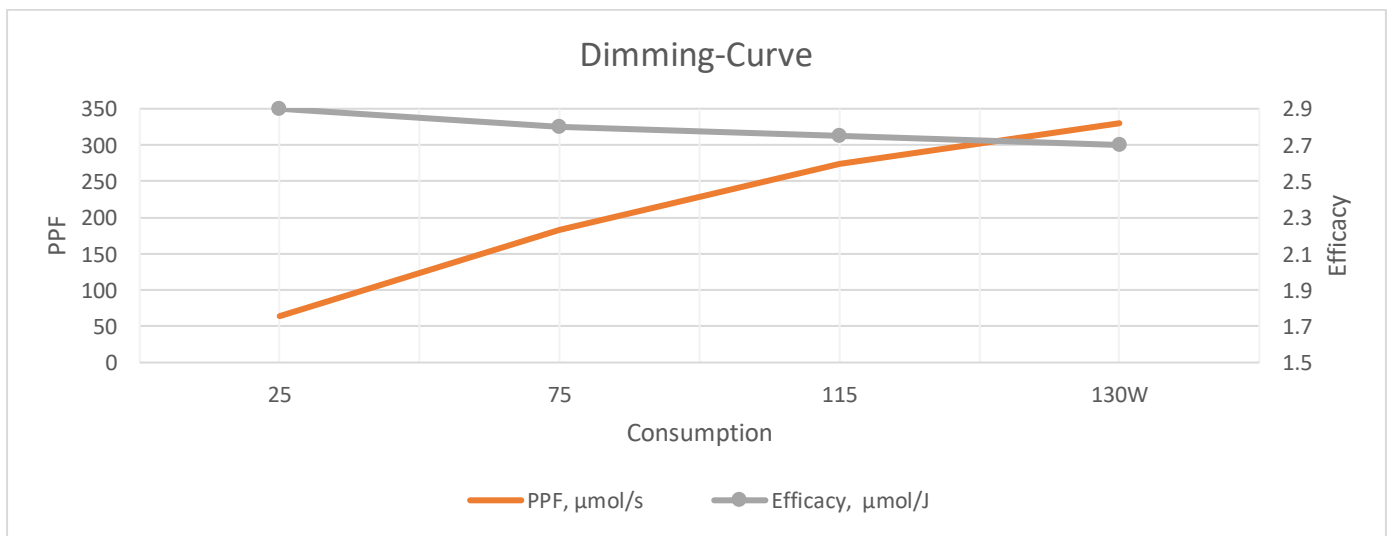
The LED Driver for HO 368 (Inventronics) supports different dimming-modes: **1-5V, 1-10V, PWM, Multiple Timers** **The use of a potentiometer is sufficient.** Even if the signal comes via PWM (pulse width modulation), it is regulated internally to 0-10V. This means there is no flickering even with PWM dimming.

Dimmer-Connection Sample: Potenziometer, 10kΩ



Characteristic:

Min (25W, 0.15A) - MAX (standard) (130W, 0.60A)



Cleaning instructions

Ideally, cleaning by means of oil-free air (e.g. central supply or spray can) is recommended. The LEDs or the board are blasted with clean air. If compressed air from a central supply is used, purified air must be used. Otherwise, contaminants like oils may be sprayed onto the board. The simplest method is cleaning the LEDs with a clean, soft, lint-free, dry cloth (cellulose or linen). The cleaning must be done without mechanical action! If this is not enough, isopropyl alcohol can be used. Ultrasonic cleaning is not recommended. Ultrasonic cleaning can damage the LED

Warranty

All products have **2 Years full warranty**. In case of damage, contact your supplier or retailer to check and claim the warranty.

Service and Support

Please contact your supplier or retailer for technical assistance or support.

Take back and disposal



This product must not be discarded as household waste. Do not dispose of the products via household waste. Contact your supplier to return the goods.

About hortioNE GmbH

hortioNE GmbH
6794 Partenen, Gafadura 43, Austria
Company register: FN519683s
Company Court: Feldkirch
UID.: ATU74784058
Mail: info@hortione.com

hortioNE on social media
Web: www.hortione.com
FB: facebook.com/hortiOne
IG: instagram.com/hortione_led
Twitter: twitter.com/HortiONE_LED